

CW2 TVT bTT aTb TR P b a P WTaT bb T PR TSVTb WP
b TRPbTbP Tdb P bW P TP a PR P

RaTP TP TaTRT PRT W SP SaTVb Ta WTR P b
T a TS P R P b b TS WTR P baTVb Ta
aTRT TR P b WP WP T TT aT Tb TS aaT T
P TP P STTa P WTR P P S a WTR P P P Sb YTR
WT R T
T b aT WTaT b a RTS aP Pa Tbb T Ta Tb VP PR P

aTRT T WTR P b WP WP T TT aPVTS a Tb VP
TdbTT WT Tb VP R S RTS W2 aS P a

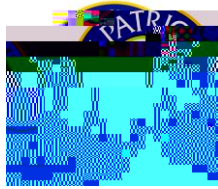
aTRT T WTR P b WP WP T TT aPVTS a Tb VP
R S R W Tb VP
a Wb YTR WTR P WTaTaTP
WTR P P WP W PaT Tb VP V WTR P
ATR aSb W R T WTR P
Tb WTR P P P S W TPSTabW T Ta W R T
ATb TbP SaTR aSb W R T WTR P
P PVTb W a RTbb W P P R PTS TaP T WTaTaTP
4 b aTb W a RTbb b aP b PaT WP R ST P b WSP S W R T b PbTS

!

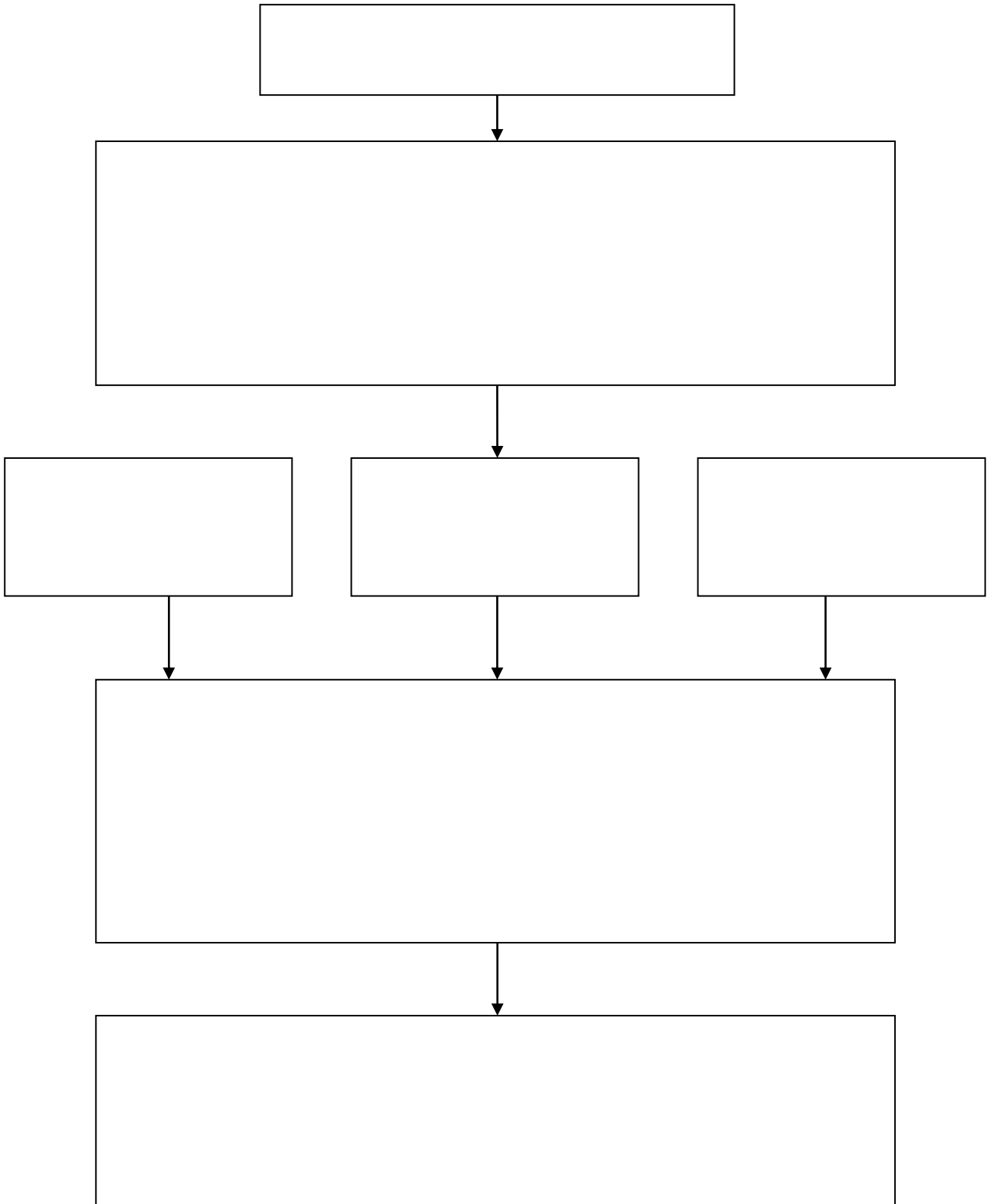
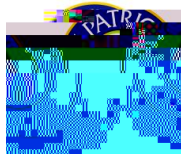
PRRT R P b W Pb
V WTR P WTR P baTVb Ta
aT Tb WTR P b a V aaTR aSb WTR P
2 Pa Tb WTR P P bWb SVT WTR P a P
0b b WTR P P WP PR W PaTbTT V
CaPVTb WTR P STTa V W Tb Tdb SaTR WTR P

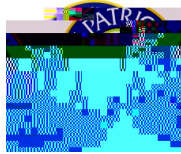
!

SaTR R P b WTaTP 2 aS P a



0 R P b TWP STSR ST P
a a 9P Pa R P bRP TSaTR TS WTB bTb W6 SBP Pa P
0 bR P b TR bSTaTSRPaT P SaTb STS P a aPT WTaT
bb T
CWTR P P T a TSP a VaTbb WTaTPb b aP STRb bP S W
R Tb WP T T T TS
CW2 TVT bR TS aT T VaTR æ VR bb TbPab V a R P P b
P SaT aP P WR P aT SbP SaTb b
CW2 TVT P PRRTbb WTaR P WP S V aV





CWT2 P b R a b R Y R W

2WSBP TB P SPa**S**b
*2WSaT b6 Pa**S**P OR!*

P S W V2 TVT RTb

Tb P a TR P S ATb TR R
2WS a TR R
a 7TP WP SBP T R
6aT P RTbP S b Tb R
PaT 2 TVT Pa T**b**W